



**Puma Realtors Pvt. Ltd.**

SCO 6-8, 1st & 2nd Floor, Sector 9D, Madhya Marg, Chandigarh- 160009, India.

Phone: +91 172 4688400, Fax: +91 172 4688428

[www.ireoworld.com](http://www.ireoworld.com)

The information and contents set out herein, including all services, facilities, infrastructure, designs, specifications, features, layouts, plans, areas are subject to change, without notice, at the sole discretion of the Company. All images are artistic conceptualization for illustration only and do not purport to exactly replicate the product(s). Soft furnishing, furniture, appliances and gadgets are not part of the offering. Club membership and usage shall be subject to fulfillment of terms & conditions as may be decided by the Company. 1 acre = 4046.85642 square meters



**ABOVE THE ORDINARY**



# ELEVATING LIFESTYLE

*with a touch of ingenuity*

At Ireo Rise, you meet ingenuity at every turn. In an array of midrise and low-rise homes designed by international architects with intelligent space planning. On a walk amidst verdant landscape of themed gardens and green piazzas. With your children happily playing in vehicle free walkways and courtyards. At the state-of-the-art clubhouse. And in various modern amenities that raise your lifestyle above the ordinary.

Located just minutes from downtown Mohali, Ireo Rise exemplifies how design and planning add finesse and comfort to everyday living.











# LOCATION

*Close to a buzzing city life*

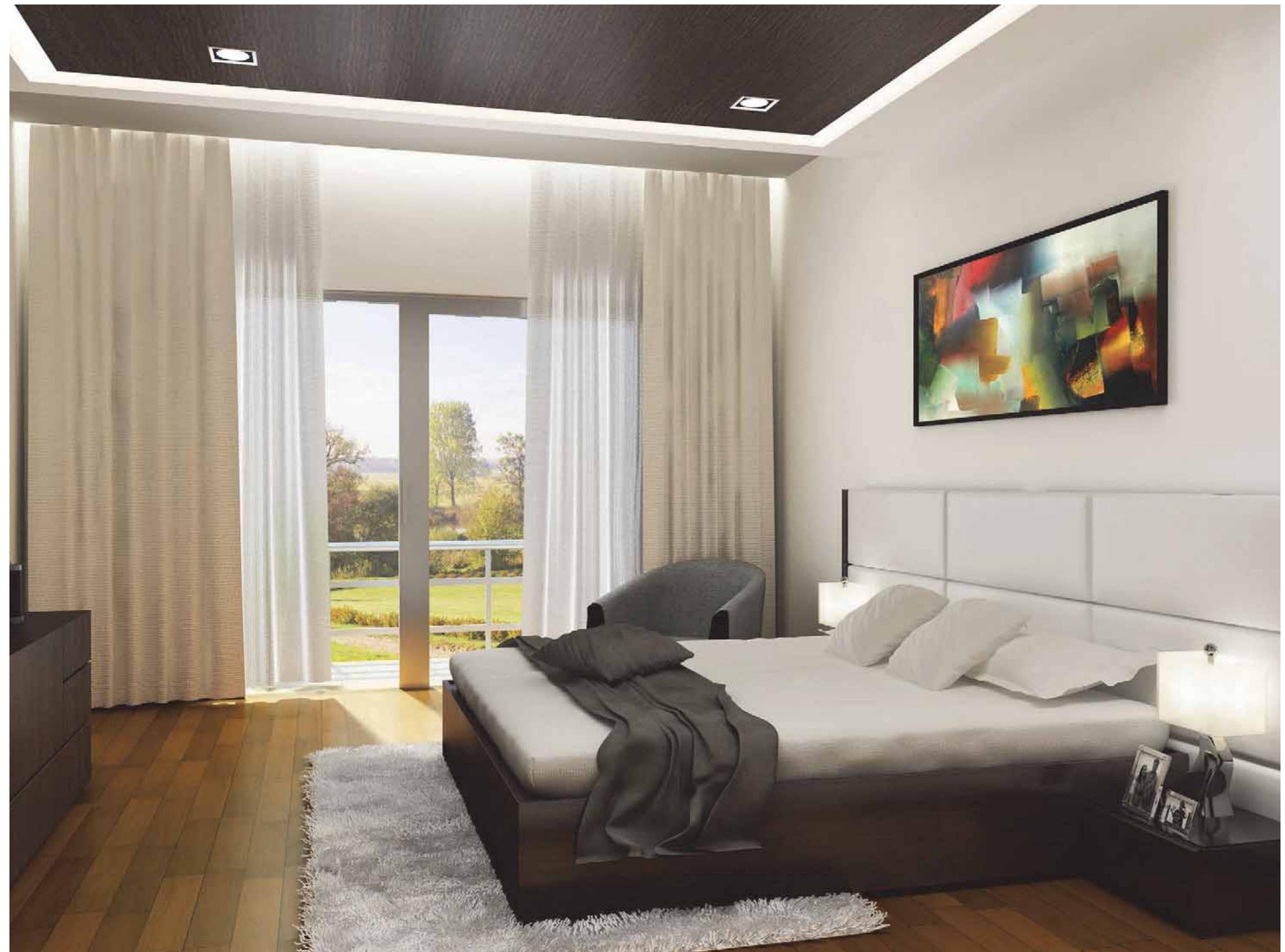
Sprawling over 7.6 acres in Sector 99, Ireo Rise is strategically located near the proposed Mohali City Centre. The international airport & Fortis hospital are at a few minutes' drive.

Also in near vicinity is the country's topmost management institute, Indian School of Business (ISB). With the Punjab Cricket Stadium just a few kilometres away, you stay right at the hub of all the action.

# ELEGANT HOMES

*With more space & more comfort*

Come home to spacious rooms of fresh air and natural light. The ceilings are high. And windows larger across length and breadth. Open balconies bring picturesque views of the lush landscape. Add to that an open lounge area for living and dining, and a modular fitted kitchen. Elegant bedrooms & bathrooms with modern fixtures complete the package. All together, making your home a microcosm of open living.











# TRAFFIC-FREE LIVING

*For safe play zones and refreshing walks*

The parking is tucked underground, with ingress and egress ramps for easy access and elevators that take you directly to your floor. Visitor parking is near the entrance. Together, this creates a virtual no-car paradise that keeps vehicular traffic in the complex to a minimum. This makes space for vast open areas where your children can play with free abandon, for pedestrian zones where you take rejuvenating walks, and for beautiful landscapes that your whole family can enjoy.







# THEMED GARDENS

*To spend quality time with nature*

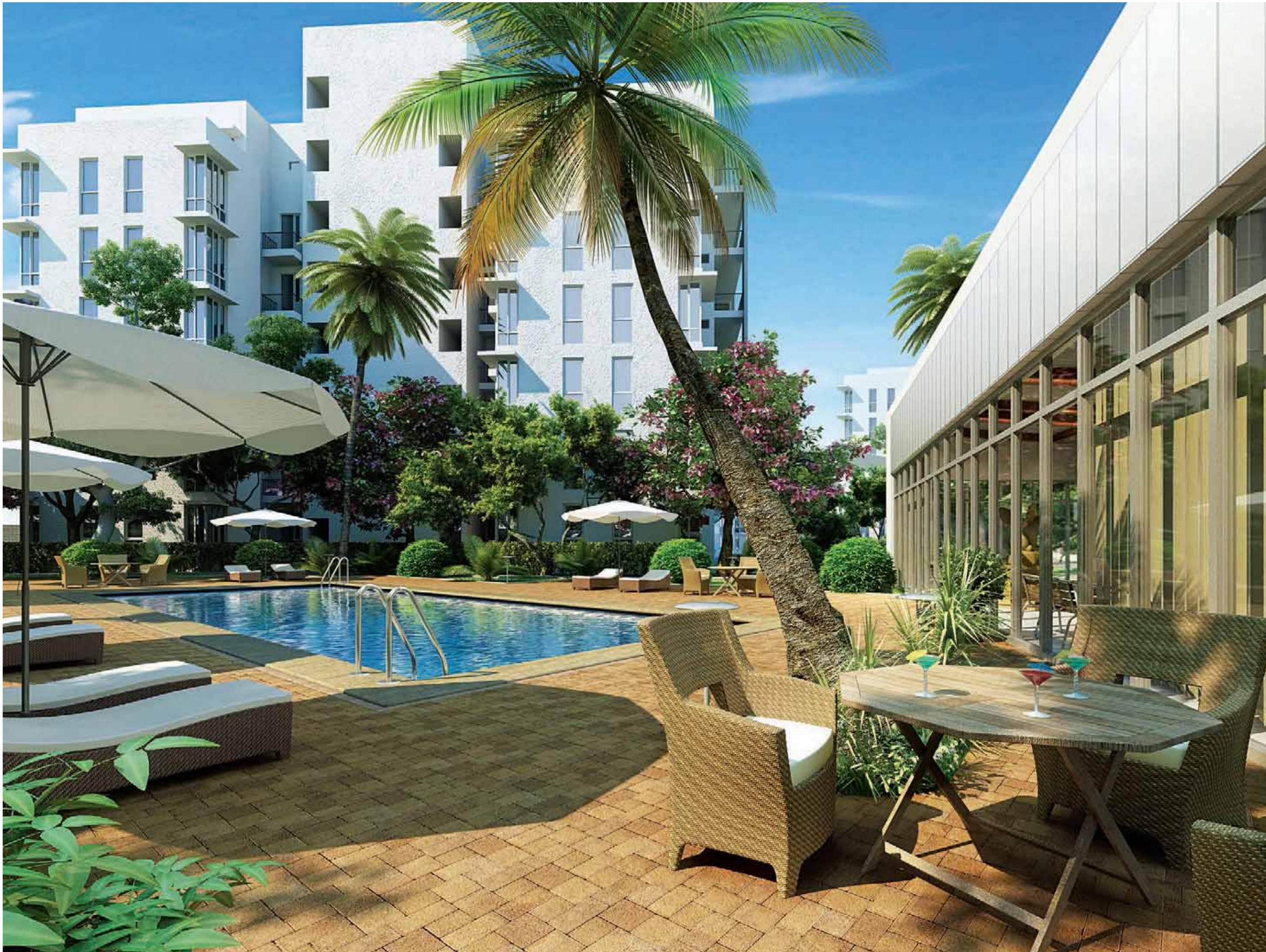
A bounty of fresh open spaces and sounds of chirping birds greet you at Ireo Rise. Homes here are flanked by over 3 acres of beautiful landscaping. The three distinct themed gardens - Juniper Court, Frangipani Court and Cassia Court, form a lush green zone at the heart of the complex. Interlinking the gardens are landscaped jogging trails and walkways that span the entire perimeter of the complex. Inner green courtyards are ideal for kids to play and convenient for you to keep a close watch on them from your kitchen.











# A LIFE OF LEISURE

*Is all yours*

Make time for leisure everyday at the private clubhouse - a perfect unwinding zone to indulge, rejuvenate, connect, celebrate, and above all, to relish life. Celebrate the important occasions with your family and friends at the spacious party hall. Or, entertain your guests at the poolside barbeque. With a state-of-the-art gymnasium and swimming pool, there are ample amenities for the health and fitness enthusiasts. A Badminton Court and Semi Basketball Court make sure your growing teens are productively occupied. A dedicated park and play area for the younger ones keeps them happily indulged.



# ENGAGE IN PLAY

*With choices aplenty at the clubhouse*

Indulge in a plethora of activities to stay physically fit, mentally agile and challenge the hidden sportsman in you.

- Jogging Track
- Gymnasium
- Indoor & Outdoor Sport Facilities
- Cricket Pitch
- Multi-purpose Hall
- Swimming Pool







# SITE MAP

- 1 MAIN ENTRY
- 2 EXIT
- 3 GUARD ROOM
- 4 VISITOR'S PARKING
- 5 SHOPPING AREA
- 6 LANDSCAPED COURTS
- 7 PALM COURTS
- 8 RAISED SEATING AREAS
- 9 SEATING AREAS
- 10 CHILDREN'S PLAY AREA
- 11 CLUB
- 12 SWIMMING POOL
- 13 KID'S POOL
- 14 VEHICULAR ROAD
- 15 YOGA LAWN
- 16 CRICKET PITCH
- 17 BADMINTON COURT
- 18 SEMI BASKETBALL COURT
- 19 TREE GROVES
- 20 LANDSCAPE GREENS
- 21 PERIMETER JOGGING PATH
- 22 BASEMENT RAMP



