



LET'S MEET HERE





Business, Fun, Entertainment, Retail Therapy, Food & Drinks...how many times have you found your usual haunts boring and humdrum? Here you shall find everything different-tastefully done architecture and a lively, smart environment that is compellingly inviting.

## A PROJECT BY



## ABOUT US

Social Square is promoted by Home and Land Planners LLP – a company known for transparency and commitment to customer service excellence. Our company has set benchmark standards in quality of construction and delivery of timely possession in both the verticals - residential and commercial.

We have transformed ourselves heavily with the changing trends and times in real estate industry of the region. We have always imbibed the best of what an “era” or “times” gave us and moulded that into the fabric of our systems. This way we have bettered our own systems. We have always invited and honed fresh talent in our cadres to create a human resource pool that is a cause of envy for the rivals in industry. The team is lead by an agile management with lots of fresh ideas and unique experiences both in real estate as well as non-real estate businesses. All the directors are renowned for their managerial, financial and marketing skills and they integrate them into day to day working to set landmarks and achievements in different spheres.



# FROM THE DIRECTOR'S DESK



National real estate market has burgeoned parallel to opening of the economy in the early 90s. Punjab and the region around took some time to achieve acceleration in growth. But by the end of the first decade of this century, the demand and supply started consolidating and by 2015, the demand for the commercial spaces picked up. Mall shopping, culture of plug and play offices, etc, entered the consumer culture. We, too, have been observing the changes carefully and shifting gears according to the demands of the market. We began as an only residential projects company but now we have a sizeable number of commercial projects coming up. In the meanwhile, we could entrench ourselves in the psyche of the consumer as a company of ethics, fair deal and transparency. Our channel partners and customers vouch for our conduct and spread a positive-word round for us. We believe that is our towering achievement. And, we promise to continue to set up benchmark standards in customer service and product excellence.

## VISION

We envision to deliver a real estate experience to the customer that is essentially woven around their needs. We believe that transparency and customer satisfaction are essential to building relationships and these relationships are the primary drivers in the market. We, therefore, target to emerge at position of pre-eminence in the northern region of the country.

## MISSION

We are a values-driven organization. We work with diligence to ensure ethical and fair treatment to all the stakeholders. We work honestly and make our past experiences to work today for the benefit of our customer.



# HELLO MULTIPLE INVESTMENTS

YOU ARE TIRED OF HEARING BSE, NSE, NASDAQ, DALAL STREET, PEARL STREET, PER  
SQUARE YARDS, PLOTS AND KOTHIS. PROBABLY THEY MAY NOT HAVE YIELDED  
EXPECTED RESULTS. MAYBE THEY HAD. BUT HERE ARE INVESTING OPTIONS THAT  
SHALL REDRAW THE LIMITS OF RETURNS ON INVESTMENTS. ASK US TO KNOW  
WHAT-IS-ON-OFFER. THERE'S SOMETHING HERE TO SUIT EVERY POCKET.



YOUR NEW **FASHION**  
STARTS HERE



HELLO  
SHOPPING

SHOP TILL YOU DROP IS PASSÉ. SHOP @ SOCIAL SQUARE IS IN. AND DIDN'T THE SUPER SENSATION OF 90s BO DEREK SAY, "WHOEVER SAID MONEY CAN'T BUY HAPPINESS SIMPLY DIDN'T KNOW WHERE TO GO SHOPPING." SO-BE-HERE-AND-BUY-OUR-SLICE-OF-HAPPINESS!







# HELLO ENTERTAINMENT

WHEN DID YOU LAST HAVE THE MOST ENTERTAINING TIME OF YOUR LIFE. O' WELL  
MANY TIMES. THEN BE READY FOR A CHANGE OF PERCEPTION WHERE YOU WILL  
HAVE "HELLUVA TIME OF YOUR LIFE." SOMETHING WHAT BEATLES OFFERED ,  
RAMESHSIPPYCREATED OR PUNKS CELEBRATED IN THEIR OWN TIMES.

COME-STEP-INWE PROMISE TO MAKE YOUR DAY.



HAPPY DAYS  
ARE HERE AGAIN...



## HELLO TOGETHERNESS

FUN, FROLIC AND FOOD AND DRINKS... YOU HAVE MANY FRIENDS TO CHILL WITH. NO MORE TRUDGING UP TO MADHYA MARG AND FINDING YOUR WAY BACK IN THE TRAFFIC IN THE RUSH HOUR. NOW YOU GET THE RIGHT SPACE FOR THE BLOSSOMING-OF-FRIENDSHIP AND FLOURISHING-OF-TOGETHERNESS.







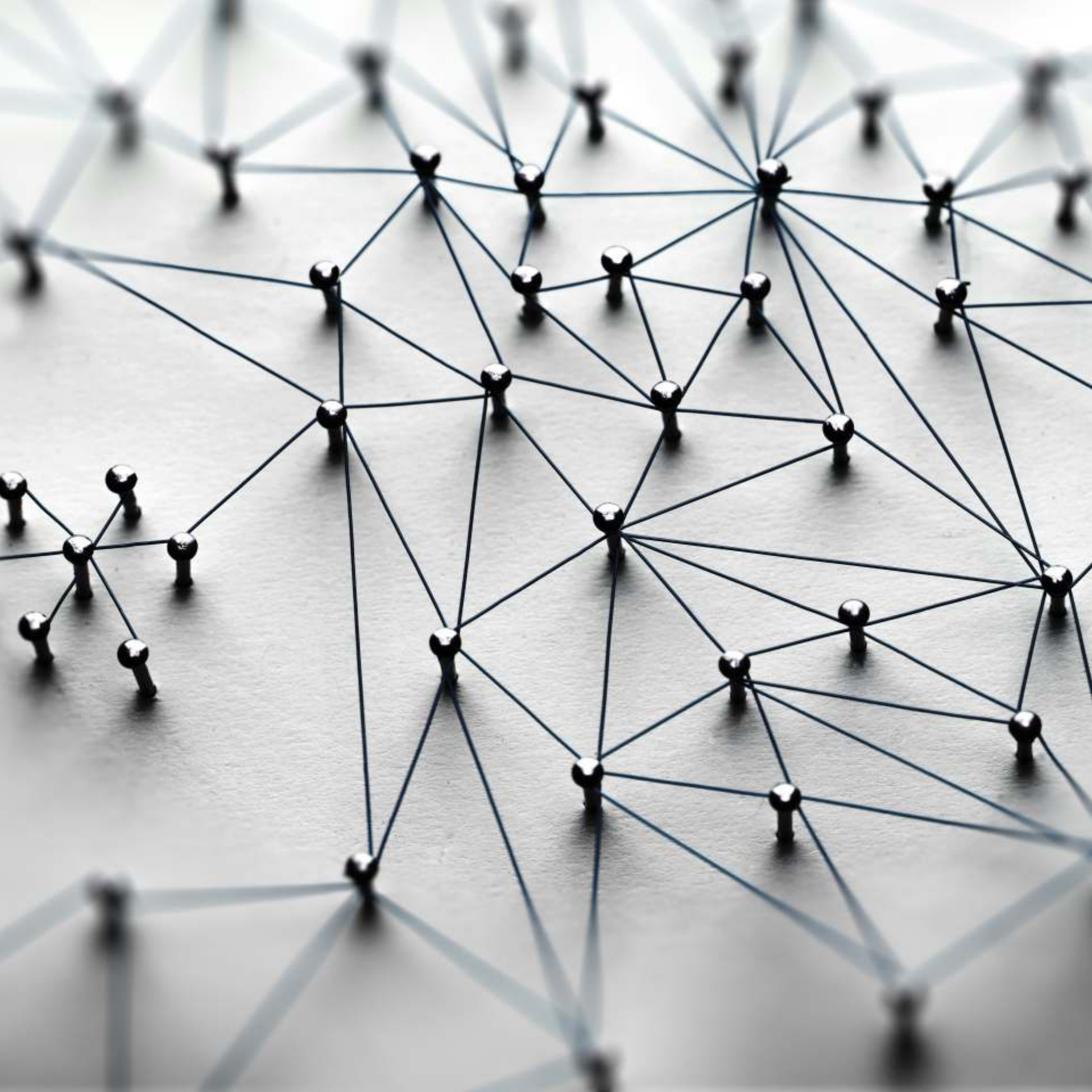
# HELLO TOGETHERNESS

YOU OFTEN CRIB AND SO DO WE. "THERE AIN'T ANY OFFICES IN THE REGION LIKE THE ONES YOU HAVE IN BENGALURU OR MUMBAI." YES, THERE ARE MANY. BUT NOT ANY LONGER. @ SOCIAL SQUARE THE OFFICES ARE DESIGNED WITH THOUGHTFULNESS. PLUG AND PLAY IS JUST ONE THING. INNER AESTHETICS, ERGONOMICS AND STATE-OF-THE-ART DESIGNING HAS BEEN ENSURED

HELLO...ARE YOU READY.







# HELLO CONNECTIVITY

CONNECTIVITY BRINGS EVERYTHING NEARER AND MAKES US HIGHLY ACCESSIBLE FROM MAJOR LANDMARKS. WE ARE LOCATED IN THE CENTER OF THE TRI-CITY. RAILWAY STATIONS, AIRPORT, TRIBUNE CHOWK, AEROCITY DOWNTOWN ZIRAKPUR, MOHALI AND PANCHKULA ARE A FEW MINUTES AWAY.







# ZIRAKPUR- OPPORTUNITY

OLD-TIMERS TELL US—ZIRAKPUR ONCE WAS A SLEEPY TOWN, A DOZEN ODD HOUSES, A FEW SHOPS AND A BUS STAND. BUT ITS OPPORTUNITY LAY IN ITS LOCATION—THE INTERSECTION OF DELHI-CHANDIGARH AND PATIALA-SHIMLA ROUTES AND PROXIMITY TO CHANDIGARH WOULD MAKE IT A WORTHWHILE PLACE TO LIVE AND INVEST. NOW IT IS RAINING OPPORTUNITIES AND IT IS BURSTING AT ITS SEAMS—MOST ATTRACTIVE IS ITS MULTI-STORIED HOUSING. AN INTERNATIONAL AIRPORT IS NEARBY. LOTS OF IT COMPANIES HAVE PROMISED INVESTMENT IN ITS VICINITY.

AND THERE'S LOT MORE TO COME...



SHOP.  
EAT.  
PLAY.  
LOVE.  
EARN.  
WORK.  
STAY.

THE FIRST  
COMMERCIAL  
PROJECT

ON ZIRAKPUR-PATIALA HIGHWAY







A NEW  
LANDMARK  
TAKES SHAP



# THE MASTERPIECE OF OPPORTUNITY

OPPORTUNITY IS EMBLAZONED ON THE FAÇADE OF SOCIAL SQUARE. OPPORTUNITY TO DINE, OPPORTUNITY TO WORK, OPPORTUNITY TO LIVE, OPPORTUNITY TO ENTERTAIN AND ABOVE ALL, OPPORTUNITY TO INVEST—AND IT REDEFINES THE LIFESTYLE STANDARDS. THERE'S MORE YOU CAN DO HERE THAN WHAT YOU EVER EXPECTED







A RICH ENTRANCE THAT  
IS ICONIC AND SYMBOLIC OF ST



# SOCIAL SQUARE

THE HUB OF WORK, LIFE, ENTERTAINMENT AND FUN HAS A BOUQUET OF OFFERINGS. WE HAVE DESIGNED EVERY PRODUCT AROUND YOUR LIFESTYLE NEEDS AND IN TUNE TO THE CONTEMPORARY TIMES.



# FUN. FOOD. ENTERTAINMENT.

HERE YOU HAVE THE MOST STATE-OF-THE-ART CINEMAS. HERE YOU HAVE THE MOST ENTERTAINING TIMES SEEING THE LATEST HINDI, ENGLISH BLOCKBUSTERS NOW YOU NEEDN'T GO TO CHANDIGARH OR MOHALI FOR RECREATION. THE PEOPLE THERE ARE HEADED TOWARDS SOCIAL SQUARE.

MULTIPLEX | FOOD COURTS | GAMING ZONE

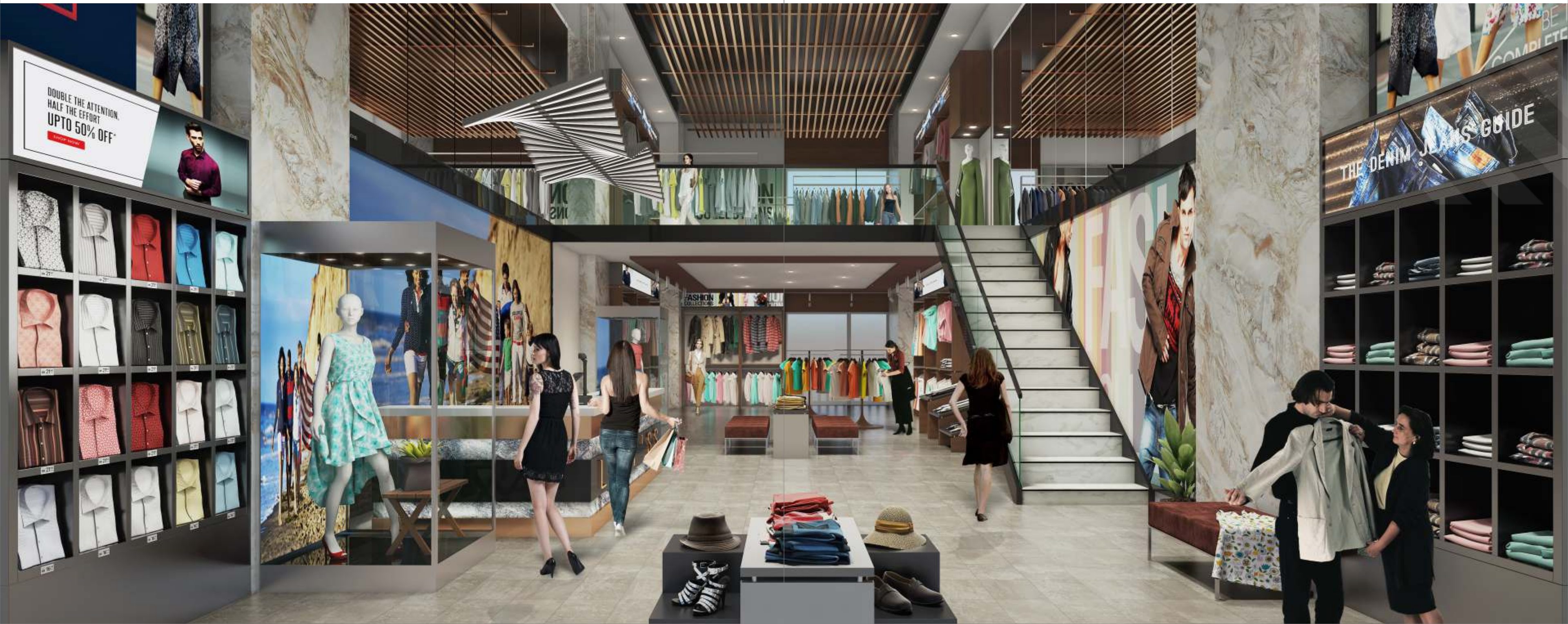




# SHOP. RETAIL. DISCOVER.

SCO FLOORS | BAY SHOPS | SMART RETAILS

YOUR WATCH MAY BE SAYING SOMETHING ELSE BUT IT IS "SHOP O' CLOCK" HERE AND YOU GET TREATED TO THE BEST RETAIL THERAPY. THE HIGH-FASHION OUTLETS SHALL MAKE YOU FORGET THE BEST SHOPPING DESTINATIONS!





# FITNESS. HEALTH. LIFE.

EVERYDAY IS ANOTHER CHANCE TO BECOME FITTER, MENTALLY  
HEALTHIER AND LIVE BETTER TO BE THE BEST VERSION OF YOU.  
WHERE ELSE BUT HERE!

GYM | SPA | JOGGING TRACK & OPEN SPACES





# WORK. BUSINESS. GROWTH.

OFFICE SPACES

CONFUCIUS SAID, "CHOOSE A JOB YOU LOVE AND YOU WON'T HAVE TO WORK FOR LIFE." TODAY, IT IS EQUALLY TRUE TO SAY THAT CHOOSE THE PLACE OF YOUR WORK AND YOU WON'T HAVE TO WORRY ABOUT GROWTH FOR LIFE.





# WORK. BUSINESS. GROWTH.

SOHO | SERVICED APARTMENTS

THE MOST COMFY PLACE OUT OF YOUR HOME. YOU DO YOUR BUSINESS, ATTEND A SEMINAR OR GO VISIT THE SCENIC SPOTS IN THE REGION AND COME BACK TO YOUR LITTLE PLACE THAT SHALL MEET ALL YOUR NEEDS AND SOME BIT OF INDULGENCE!







WHEN INNOVATION  
DRIVES EVER-UPWARDS  
GROWTH STANDS TALL



# PROJECT FEATURES



600 FT WIDE FRONTAGE ON ZIRAKPUR - PATIALA NATIONAL HIGHWAY.



CORNER SITE ON VIP ROAD WITH NO FLYOVER ZONE.



**SUITABLE FOR ALL AGE GROUPS:**

- GAMING ZONE FOR KIDS.
- MULTIPLEX, SHOPPING FOR YOUNGSTERS.
- 90000 SQ. FT AREA FOR OPEN LANDSCAPE PODIUM FOR ELDERLY.



64% OF OPEN AREA.



BIGGEST PARKING SPACE AMONG OTHERS.



DOUBLE HEIGHT SO FLOORS ON  
UPPER GROUND FLOOR WITH WIDE CORRIDORS.



SINGLE FLOOR FOR MULTIPLEX, FOOD COURT, FINE DINE AND  
ELECTRONIC GAMING ZONE.

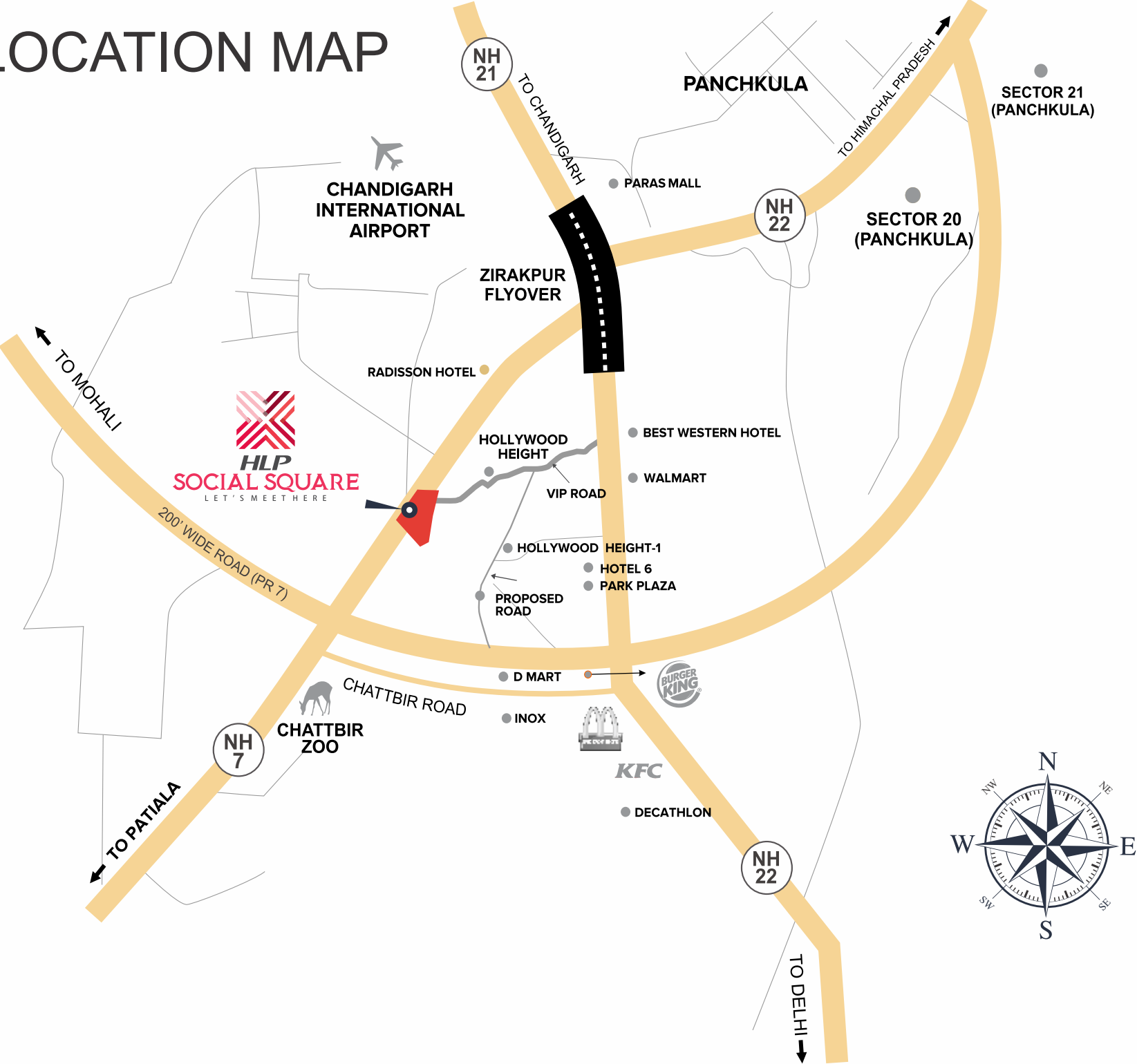


AIR CONDITIONED RETAIL MARKET





# LOCATION MAP



MAP NOT TO SCALE

# EFFORTLESSLY CONNECTED

- Public Transportation

  - Airport - 5 mins
  - Bus Stand - 5 mins
  - Railway Station - 15 mins
- Golf Course

  - Panchkula Golf Course - 15 mins
  - Chandi Mandir Golf - 15 mins
  - Chandigarh Golf - 18 mins
  - Golf Range - 15 mins
  - Devi Lal Sports Complex - 8 mins
- IT / Industrial Area

  - IT City, Mohali - 4 mins
  - Chandigarh IT Park - 15 mins
  - IT Park, Panchkula - 10 mins
  - Chandigarh Industrial Area - 12 mins
  - Panchkula Industrial Area - 8 mins
- Hospitals

  - Amcare, Panchkula, 3 mins
  - GMCH, Sector 32, Chandigarh - 15 mins
  - Alchemist, Panchkula - 10 mins
  - Fortis Mohali - 15 mins



# OUR PROJECTS



ZIRAKPUR - PATIALA HIGHWAY



SECTOR 62, MOHALI



G - BLOCK AERO CITY



ZIRAKPUR



SECTOR 5, DERABASSI

- All plans and images shown in this brochure are indicative only and are subject to changes(s) at the discretion of the company or competent authority .

- All images are artistic rendition of proposed development and are for representation purpose only.

- All floor plans, site plans, specifications, dimensions, designs, measurements, and locations are indicative and are subject to change as may be decided by the Company or competent authority . Revision, alteration, modification, addition deletion, substitution or r ecast, if any, may be necessary during construction.

- Sizes/dimensions mentioned in all drawings/documents are all of unfinished rooms and these may vary post finishing/plastering/panelling/cladding etc.

---

## General Disclaimer



**HOME AND LAND PLANNERS LLP,**

CORPORATE OFFICE : SCO 61-62, LEVEL 1, AIRPORT ROAD, SECTOR - 82, MOHALI

SITE ADDRESS : ZIRAKPUR PATIALA HIGHWAY, ZIRAKPUR.

Call: **+91 70521-70521**